

# INTAKE SUBSTATION

# INTAKE SUBSTATION

- An essential piece of infrastructure providing power to the Metro Tunnel's rail tunnels & stations
- A high-voltage connection to existing AusNet West Melbourne Terminal station on the western banks of the Moonee Ponds Creek
- Will be located in the Metro Trains Melbourne (MTM) Macaulay depot area, adjacent to the Craigieburn and Sunbury line rail corridors, the CityLink toll road bridge and the Moonee Ponds Creek Trail
- There is currently a disused MTM building in this location.

# EXISTING CONDITIONS



# EARLY WORKS

- Early works, including some tree removal and demolition, are anticipated to start in the coming months, following approval of amended Early Works Plan (originally approved in January 2018)
- Early works activities may include:
  - Demolition of existing infrastructure (disused MTM building)
  - Site preparation, clearing and installation of hoarding / temp fence
  - Utilities service connection (directional boring under the Moonee Ponds Creek and the existing train tracks to install cable routes)
  - Ground excavation and grading
  - Piling
  - Tree removal, up to 41 trees (subject to approvals).

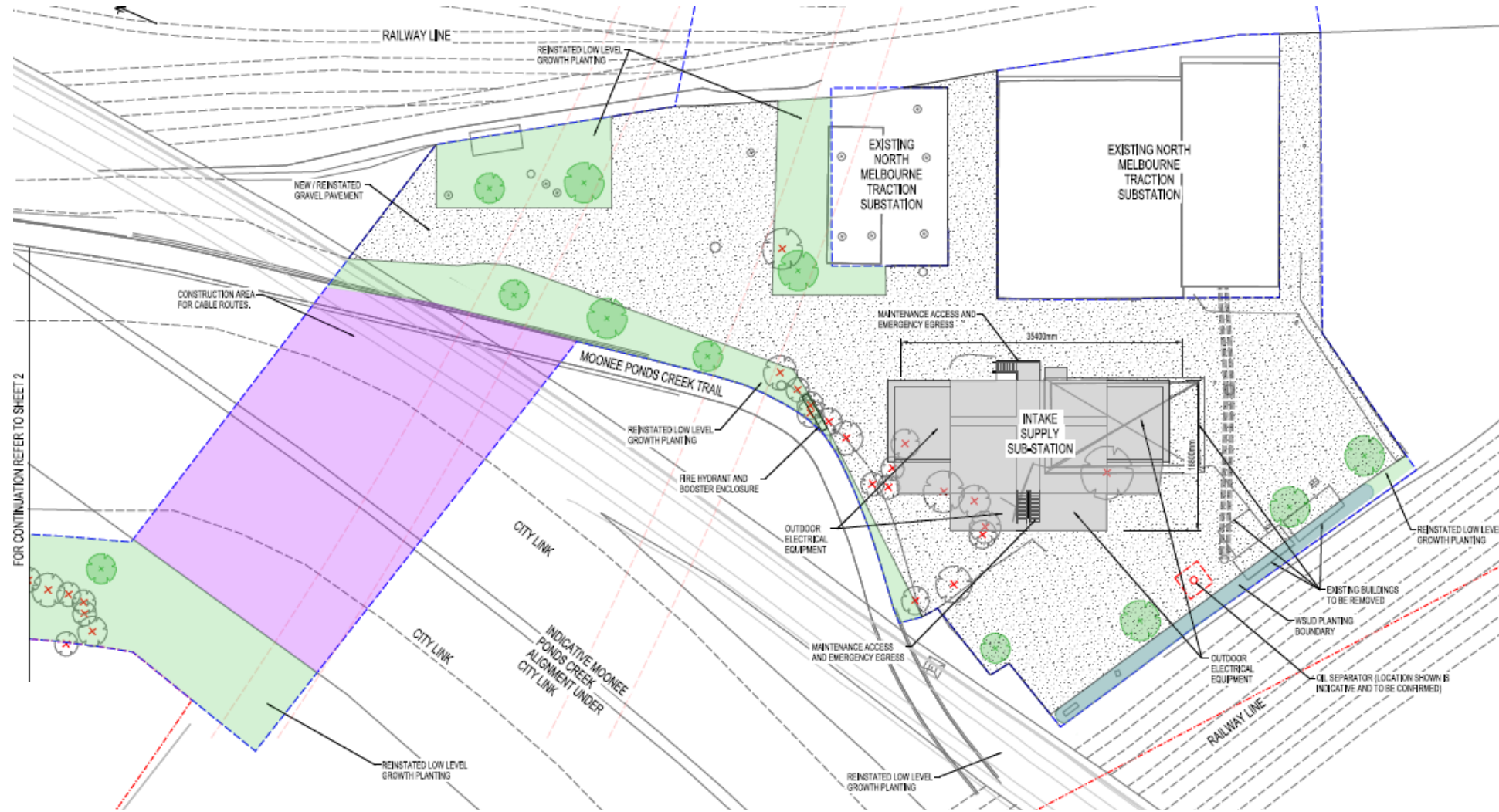
# CONSTRUCTION

- Main construction expected to commence in March/April 2020, following approval of the Development Plan (targeted approval March 2020)
  - Four months of external construction, followed by internal/electrical fit out
- Tree reinstatement, approx. 30 trees
  - Reinstatement will be undertaken in consultation with City of Melbourne

# WORKS AREA



# GROUND FLOOR & LANDSCAPE PLAN



# NEXT STEPS

- Draft Development Plan public display & comment period – 18 November to 6 December 2019
  - Available at [metro.tunnel.vic.gov.au/planning](https://metro.tunnel.vic.gov.au/planning)
  - Feedback can be submitted via online survey form on the project website
- Ongoing stakeholder consultation